



WISLACODE SOLUTIONS



Digital transformation & software development

www.wislacode.com



WISLACODE SOLUTIONS

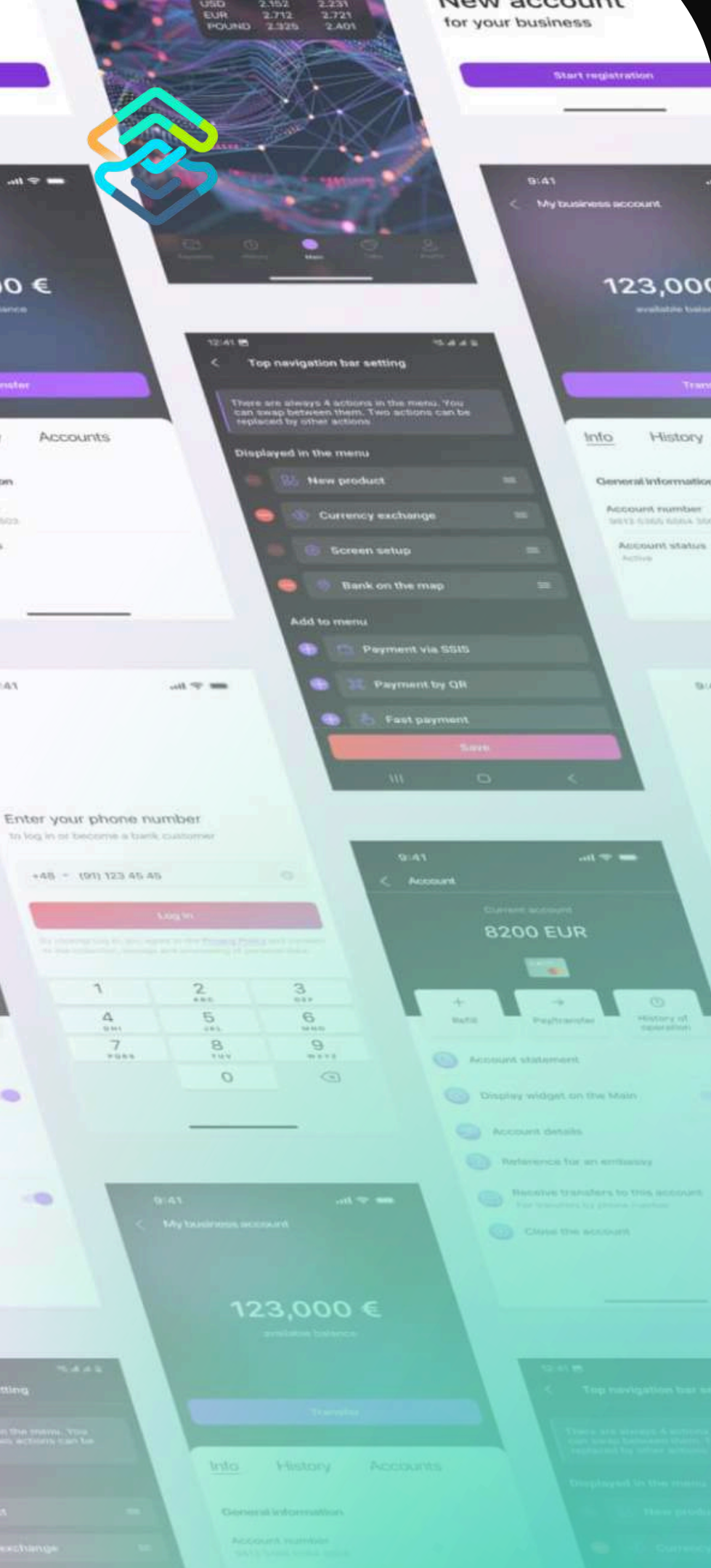
is a software development partner with
10+ years of experience building engaging
mobile and web apps

Our agile teams specialize in helping banks, leasing companies, and other financial services organizations digitize processes and improve customer interactions – without the heavy burden of legacy infrastructure overhauls.

200+

Experts

Warsaw, Poland



How we work

Transparent processes
at every stage

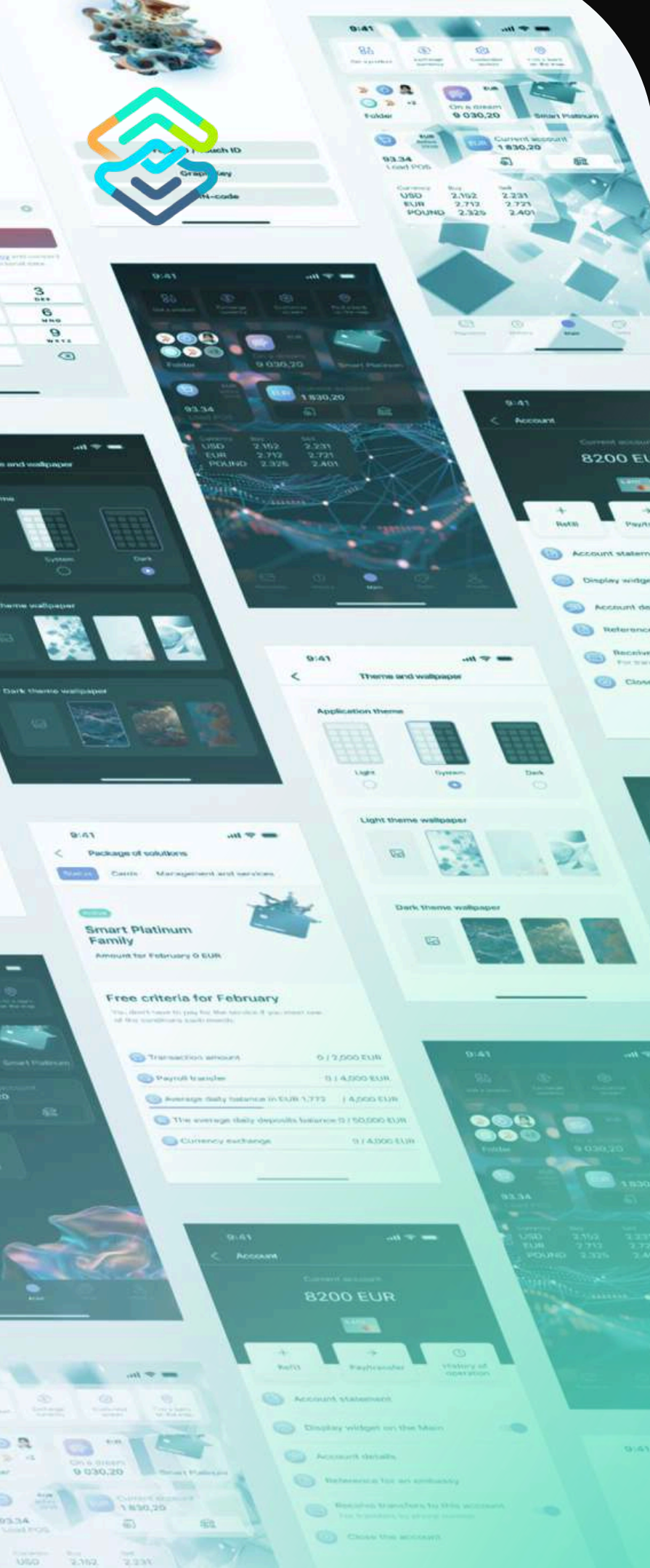
We help define the problem
and set clear KPIs.

We reduce costs through
process automation.

We integrate at any project
stage. Comfortable working
**with legacy or third-party
code.**

We can upskill the client's
team during the project.
**All source code stays
with the client.**





Challenges we solve

01. Migration from legacy systems to a modern solution
02. Complex payment integrations
03. Lengthy manual processes
04. Developing a strategic and technical roadmap
05. Optimizing the team to reduce development costs
06. Building a scalable architecture for future growth
07. Expanding the team and replacing outdated vendors
08. Avoiding insecure vendor and developer lock-in





Web & Mobile App Development

Intuitive Mobile Apps:

Straightforward, secure mobile-first solutions for mid-sized banks and financial institutions.

Leasing & Insurance Portals:

Delivering seamless self-service platforms with payment integration and automation.

Seamless Integrations:

connecting third-party APIs, payment gateways like Apple Pay and Google Pay, and external services to enhance functionality and user experience.

User-Friendly Solutions and Excellent User Experience

Design System & Streamlined User Journey

We build comprehensive design systems that reduce the customer journey, ensuring faster and more efficient interactions.

Research-Driven Personalization

We rely on user research and best practices to create personalized experiences that boost engagement and satisfaction.

Seamless Experience Across Devices

We ensure a smooth and consistent experience across all platforms, from mobile to desktop.

Skilled Team & Effective Management

Domain Experts

Team members with direct experience in Tier 1 banking and fintech projects

Agile Workflow & Transparent Communication

We follow Agile with sprints and demos, track tasks in Jira, and maintain project communication via corporate messengers like Slack.

Flexible Engagement Models

offer time-and-materials or hybrid contracts that adapt to your evolving roadmap.



Core Expertise



Omnichannel Finance Apps

End-to-End App Development

Native iOS/Android/cross-platform
Mobile apps and Superapps

Core Banking Integrations

Seamless linking with existing systems to
ensure data consistency and secure
transactions

High-Volume Transaction Support

Architectures built to handle millions of
daily logins and transactions



Rapid MVP Launch

Interactive Prototype in 1 Month

A prototype with key user scenarios for
fast feedback and refinement

Real-World Hypothesis Testing

MVP launch in 4 months to validate
demand with minimal investment

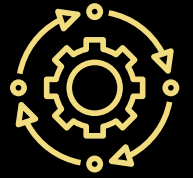
Scalable Architecture

Built for easy expansion into a full-
fledged product





Core Expertise



Legacy System Modernization

Digital Transformation Roadmaps

Holistic strategies for long-term modernization and seamless digital growth.

Performance Optimization & Scalability

Boosting efficiency, reducing technical debt, and enabling smooth scaling.

Cost-cutting legacy upgrade



Compliance & Regulatory

Certifications & Security

ISO 27001 processes, DORA, PCI DSS alignment, OWASP regular code audits.

Cases

AI routes optimizer

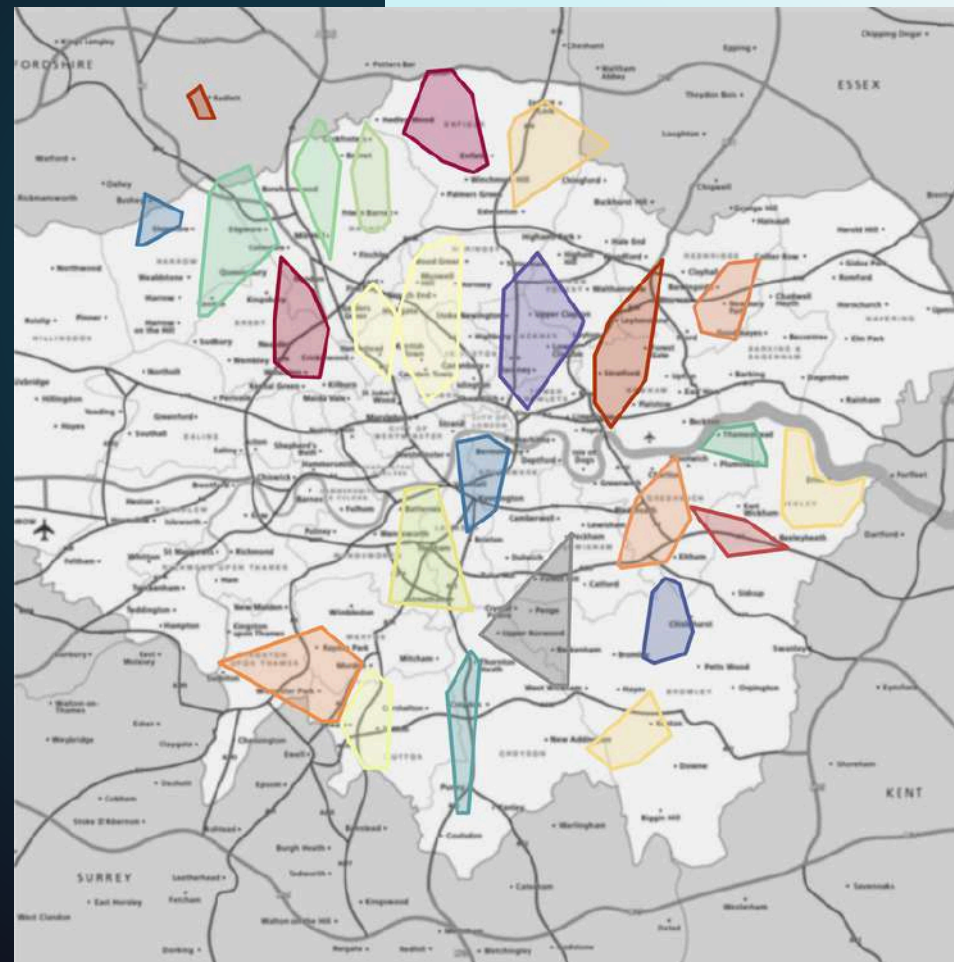


Key Technological Solutions

01 Trained models to analyze historical data and predict the most efficient routes.


02 Geospatial **clustering** using the OPTICS algorithm to group medical institutions and reduce unnecessary long trips.

03 Seamless integration with CRM and ERP systems to improve workflow and coordination.




Results*



 AI-powered route optimization **reduced travel time by 12-18 hours per month** per sales representative.

 Operational costs reduced and sales reps' efficiency increased **by over 20%**.

 **Continuous quality control** and detection of dishonest employee behavior.

*based on Medical Sales Representatives company

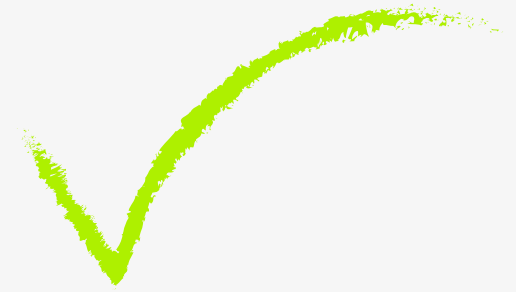
AI-Powered Knowledge Management






Key **Technological** Solutions

- 01 AI-driven knowledge retrieval** – Machine learning models analyze documents, databases, and APIs to provide instant answers.
- 02 Intelligent search with LLMs** – Uses vector-based retrieval and RAG pattern to find the most relevant information.
- 03 Secure on-premise deployment** – Works entirely within your private cloud or local servers, ensuring compliance and security.

Results



-  **Instant access to company knowledge** – Employees reduce search time and boost productivity.
-  **Eliminates data silos** – Unifies scattered documents, APIs, and databases into a structured knowledge hub.
-  **Full security control** – No external data transfer, ensuring compliance with **internal policies and regulatory standards**.

AI-based Coal Storage Fire Prevention



Key **Technological** Solutions

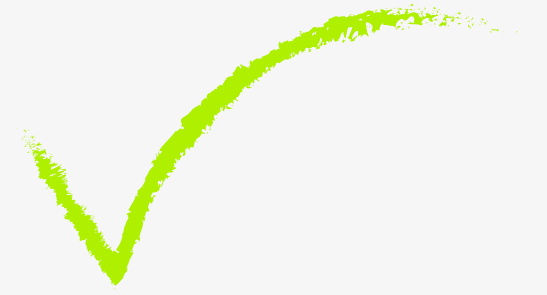
01 AI-driven thermal analysis – **Machine learning models analyze** heat patterns over time to predict potential self-ignition risks in coal piles.

02 **Geospatial monitoring with drones** – Thermal imaging cameras on drones scan storage areas, identifying high-risk zones in real-time.

03 **Automated workflow integration** – AI alerts operational teams, optimizing coal turnover schedules and preventing manual inefficiencies



Results



🚀 **Early fire detection** reduces the risk of self-ignition, preventing costly disasters

🚀 **Optimized coal management** leads to **lower operational costs** by reducing unnecessary manual interventions.

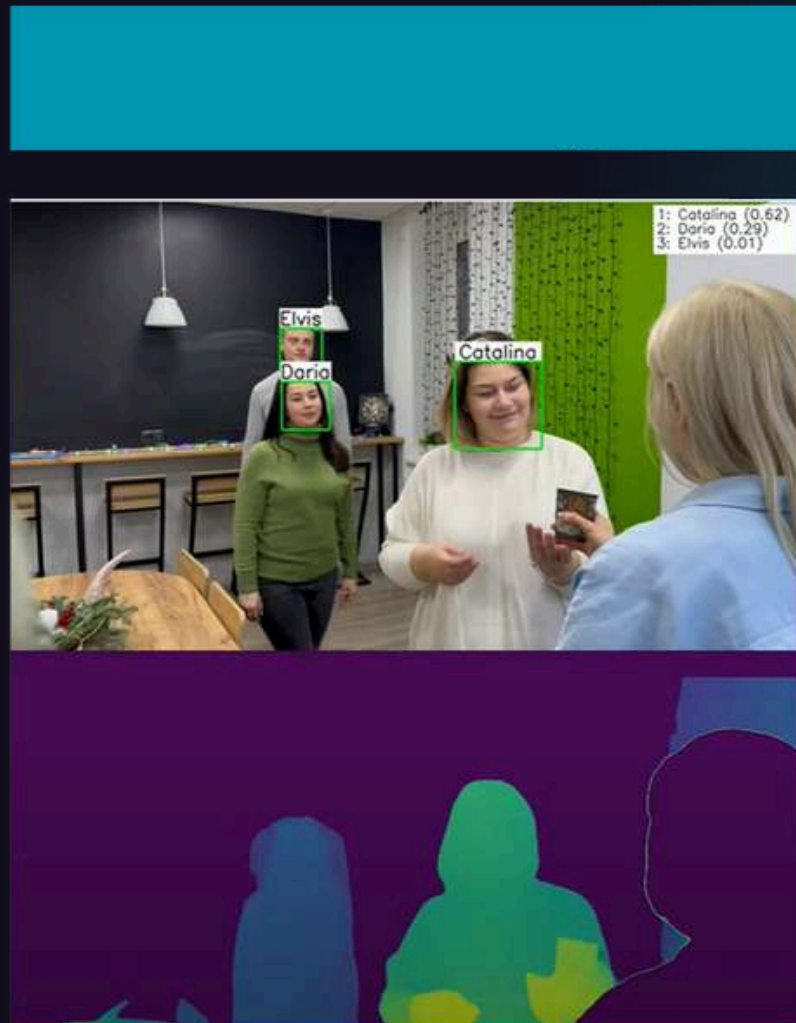
🚀 **Increased efficiency** – AI prioritizes high-risk areas, ensuring that manual efforts are directed where they are needed most.

Enhanced Indoor Positioning: Wislacode Adaptive Solution

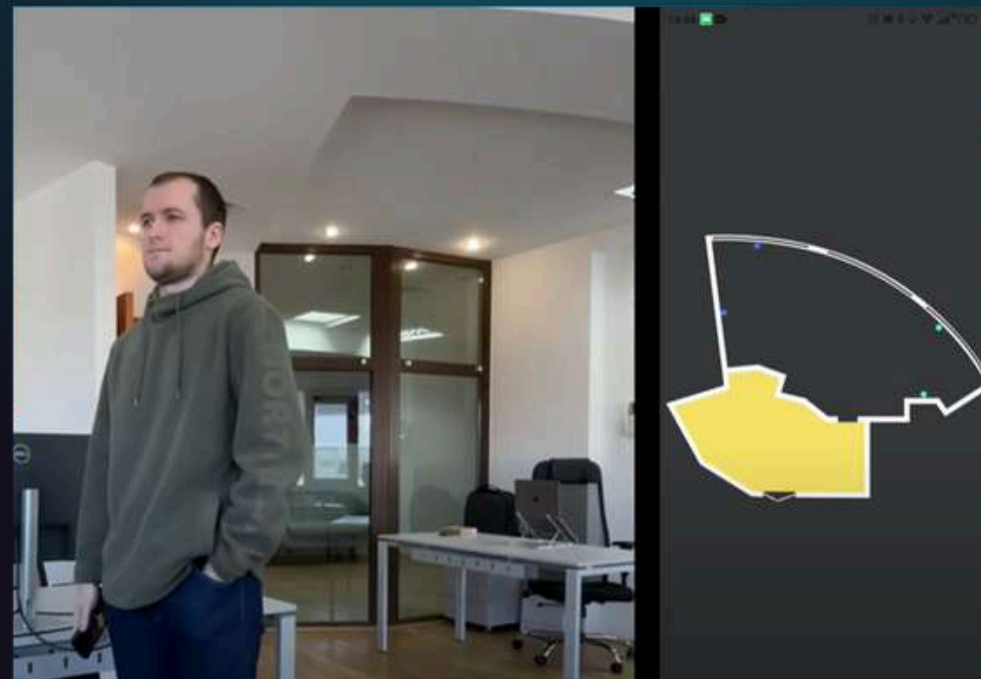


Revolutionizing Indoor Positioning

Our approach is about offering tailored solutions, balancing efficiency, cost, and precision to meet diverse indoor positioning needs.



Click to watch



- **Flexible BLE Technology** offers efficient indoor positioning with acceptable accuracy and speed, combining cost-effectiveness for various applications. It is compatible with various beacon types (iBeacon and Eddystone), allowing for diverse manufacturer options.
- **UWB for Precision.** When precision and speed are paramount, our system can leverage Ultra Wideband technology, achieving positioning accuracy up to 10 cm and response times to movement in under a second.
- **Customer and Queue Video Recognition.** We aim to utilise standard, widespread cameras, optimising for the best possible performance and accuracy. Our advanced algorithms identify customers and analyse their queue positions, providing valuable insights for service improvement.
- **Broad Applications.** It is ideal for retailers, warehouses, and businesses interested in detailed indoor tracking and enhanced customer engagement.

Inhouse Competence Centers

Top-skill experts in mobile development, cross-platform/PWA, frontend, backend, analytics, testing and design

Flexibility in Everything

Need a quick launch or rapid team reassembly to meet new business demands? We're experts at it.

Post-delivery Support

Ensure the team's participation in the finalization of the solution and elimination of critical bugs





Development Resources

CORPORATE DATA WAREHOUSES

- Storage: Oracle, Hadoop
- ETL: Informatica
- BI: Cognos, Tableau
- CDC: Oracle GoldenGate

MOBILE

- Android: Java, Kotlin
- iOS: Swift

CROSSPLATFORM | PWA

- JavaScript, TypeScript
- React, Redux
- WebAPIs

BACKEND

- Development: Java, SpringBoot, SpringCloud, SpringData, Hibernate, .NET Framework, .NET Core, ASP.NET MVC
- SQL stores: PostgreSQL, MySQL,
- NoSQL stores: MongoDB, ElasticSearch, Cassandra
- ODS: Hazelcast, Redis
- Message Brokers: Kafka, RabbitMQ

FRONTEND

- Development: Typescript, ReactJS, Redux (toolkit, saga), NextJS
- Library: RTQ, axios, cypress, jest

INFRASTRUCTURE, CI/CD

- Docker
- Mesos/Marathon, Kubernetes
- Jenkins
- Ansible

TESTING

- Zephyr, TestLink, Allure, Quase
- JUnit, Kotest, Mohito
- XCTest, Sourcery
- Selenium (Selenoid, Grid), Cucumber

ANALYTICS

- UML, BPMN
- REST, SOAP
- Axure



WislaCode customers confirm



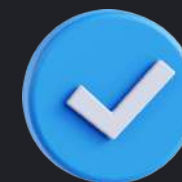
Loucas Charalambous
payabl

*We needed an Android SDK developed under **a tight timeline**, and their team delivered a flexible, user-friendly solution that integrated seamlessly into our ecosystem.*



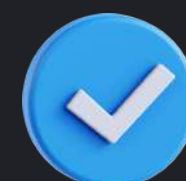
Mikhail Krasnov
Executive Chairman at Verysell Group

*The WislaCode team delivered on time and with outstanding quality. I want to mention the team's transparency while running the project – everything was **trackable, visible and manageable**.*



Aleksei Malenkin
\$lana (Monetech)

*WislaCode specialists quickly synchronised and worked with the second team involved in developing our solution. As a result, having started development from scratch, we came to the expected result quickly. The first users went to the application after **5 months**.*



Yurii Lozinskyi
Head of Applied AI Lab

*This was a very task-heavy project. However, by the end of WislaCode, we were left with a detailed roadmap consisting of clear milestones – able to be converted into tangible KPIs. Integrating this structured result ensured that the more complex and uncertain goals were converted into **30% ROI**.*



Viacheslav Kostin, CEO

+48 572 597 508

vk@wislacode.com

[LinkedIn >>](#)