



WISLACODE SOLUTIONS



# Wislacode AI, XR, Computer vision Solutions

[www.wislacode.com](http://www.wislacode.com)





WISLACODE SOLUTIONS

is a software development partner with  
**10+ years** of experience building engaging  
mobile and web apps

Our agile teams specialize in helping banks, leasing companies, and other financial services organizations digitize processes and improve customer interactions – without the heavy burden of legacy infrastructure overhauls.

**200+**

*Experts*

**Warsaw, Poland**





# How we work

Transparent processes  
at every stage

---

We help define the problem  
and set clear KPIs.

---

We reduce costs through  
process automation.

We integrate at any project  
stage. Comfortable working  
**with legacy or third-party  
code.**

---

We can upskill the client's  
team during the project.  
**All source code stays  
with the client.**







# Challenges we solve

01. Migration from legacy systems to a modern solution
02. Complex payment integrations
03. Lengthy manual processes
04. Developing a strategic and technical roadmap
05. Optimizing the team to reduce development costs
06. Building a scalable architecture for future growth
07. Expanding the team and replacing outdated vendors
08. Avoiding insecure vendor and developer lock-in







## Web & Mobile App Development

### **Intuitive Mobile Apps:**

Straightforward, secure mobile-first solutions for mid-sized banks and financial institutions.

### **Leasing & Insurance Portals:**

Delivering seamless self-service platforms with payment integration and automation.

### **Seamless Integrations:**

connecting third-party APIs, payment gateways like Apple Pay and Google Pay, and external services to enhance functionality and user experience.

## User-Friendly Solutions and Excellent User Experience

### **Design System & Streamlined User Journey**

We build comprehensive design systems that reduce the customer journey, ensuring faster and more efficient interactions.

### **Research-Driven Personalization**

We rely on user research and best practices to create personalized experiences that boost engagement and satisfaction.

### **Seamless Experience Across Devices**

We ensure a smooth and consistent experience across all platforms, from mobile to desktop.

## Skilled Team & Effective Management

### **Domain Experts**

Team members with direct experience in Tier 1 banking and fintech projects

### **Agile Workflow & Transparent Communication**

We follow Agile with sprints and demos, track tasks in Jira, and maintain project communication via corporate messengers like Slack.

### **Flexible Engagement Models**

offer time-and-materials or hybrid contracts that adapt to your evolving roadmap.





# Core Expertise



## Omnichannel Finance Apps

### **End-to-End App Development**

Native iOS/Android/cross-platform  
Mobile apps and Superapps

### **Core Banking Integrations**

Seamless linking with existing systems to  
ensure data consistency and secure  
transactions

### **High-Volume Transaction Support**

Architectures built to handle millions of  
daily logins and transactions



## Rapid MVP Launch

### **Interactive Prototype in 1 Month**

A prototype with key user scenarios for  
fast feedback and refinement

### **Real-World Hypothesis Testing**

MVP launch in 4 months to validate  
demand with minimal investment

### **Scalable Architecture**

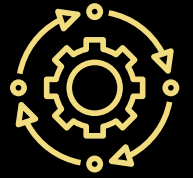
Built for easy expansion into a full-  
fledged product







# Core Expertise



## Legacy System Modernization

### **Digital Transformation Roadmaps**

Holistic strategies for long-term modernization and seamless digital growth.

### **Performance Optimization & Scalability**

Boosting efficiency, reducing technical debt, and enabling smooth scaling.

Cost-cutting legacy upgrade



## Compliance & Regulatory

### **Certifications & Security**

ISO 27001 processes, DORA, PCI DSS alignment, OWASP regular code audits.



# Cases



# Computer vision for a smart store

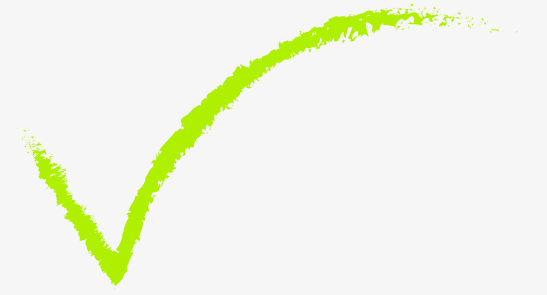






# Key **Technological** Solutions

- 01 AI-powered fridge monitoring.**  
Detect remaining cans and placement in real-time.
- 02 Multi-source data analysis.**  
Integrate video, IoT sensors, geospatial and logistics data.
- 03 Unified knowledge base.** Centralized AI-driven search for instant answers and insights.

## Results\*



-  **Reduced** out-of-stock events, ensuring consistent product availability.
-  Faster decision-making, **eliminating** manual reporting.
-  **Optimized** field operations, improving efficiency and **reducing costs**.





## How It Works

- Cameras & IoT devices **collect data in real-time.**
- AI models analyze inventory, logistics, and performance metrics.
- Insights are delivered via a unified dashboard
- for teams.

## Business Impact

- 🚀 Up to 20% improvement in operational efficiency.
- 🚀 **Real-time monitoring** of product performance.
- 🚀 Scalable and secure infrastructure, fully under client control.





# AI routes optimizer








# Key Technological Solutions

- 01** Trained models to analyze historical data and predict the most efficient routes.
- 02** Geospatial **clustering** using the OPTICS algorithm to group medical institutions and reduce unnecessary long trips.
- 03** Seamless integration with CRM and ERP systems to improve workflow and coordination.



## Results\*



-  AI-powered route optimization **reduced travel time by 12-18 hours per month** per sales representative.
-  Operational costs reduced and sales reps' efficiency increased **by over 20%**.
-  **Continuous quality control** and detection of dishonest employee behavior.

\*based on Medical Sales Representatives company



# AI-Powered Knowledge Management








# Key **Technological** Solutions

- 01 AI-driven knowledge retrieval** – Machine learning models analyze documents, databases, and APIs to provide instant answers.
- 02 Intelligent search with LLMs** – Uses vector-based retrieval and RAG pattern to find the most relevant information.
- 03 Secure on-premise deployment** – Works entirely within your private cloud or local servers, ensuring compliance and security.

## Results



-  **Instant access to company knowledge** – Employees reduce search time and boost productivity.
-  **Eliminates data silos** – Unifies scattered documents, APIs, and databases into a structured knowledge hub.
-  **Full security control** – No external data transfer, ensuring compliance **with internal policies and regulatory standards**.



# AI-based Coal Storage Fire Prevention





# Key **Technological** Solutions

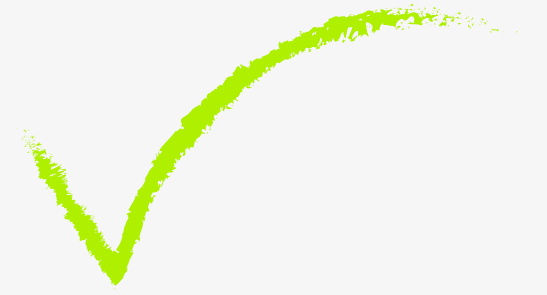
**01** AI-driven thermal analysis – **Machine learning models analyze** heat patterns over time to predict potential self-ignition risks in coal piles.

**02** **Geospatial monitoring with drones** – Thermal imaging cameras on drones scan storage areas, identifying high-risk zones in real-time.

**03** **Automated workflow integration** – AI alerts operational teams, optimizing coal turnover schedules and preventing manual inefficiencies



## Results



🚀 **Early fire detection** reduces the risk of self-ignition, preventing costly disasters

🚀 **Optimized coal management** leads to **lower operational costs** by reducing unnecessary manual interventions.

🚀 **Increased efficiency** – AI prioritizes high-risk areas, ensuring that manual efforts are directed where they are needed most.

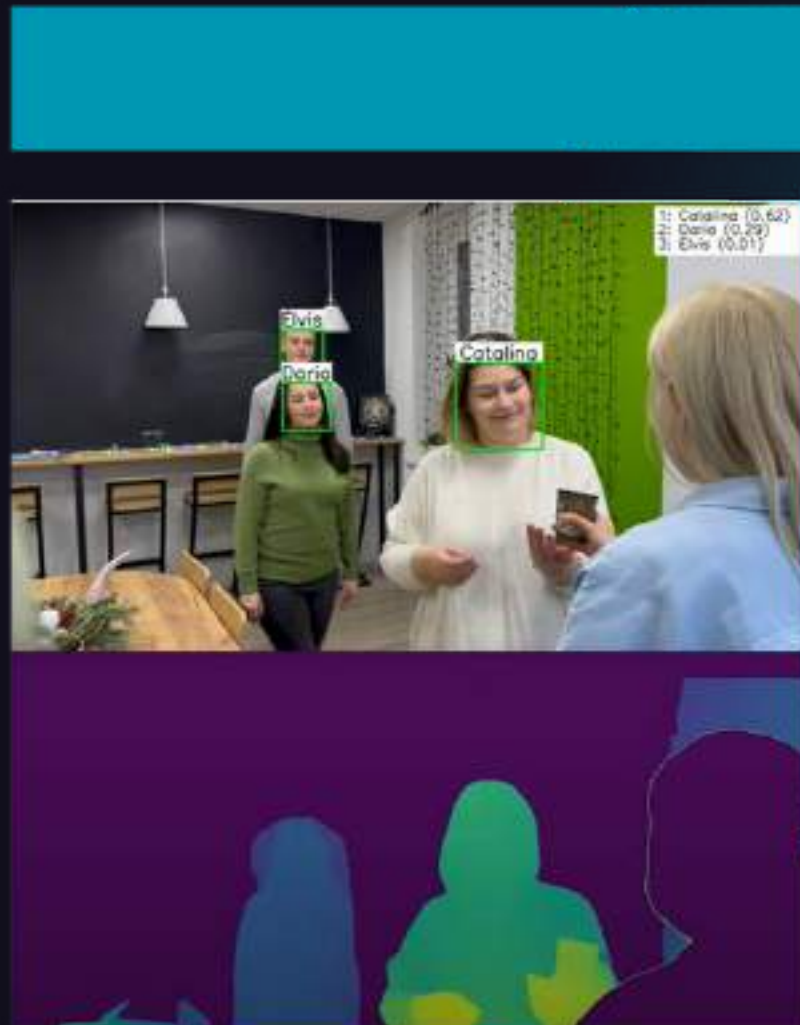
# Enhanced Indoor Positioning: Wislacode Adaptive Solution



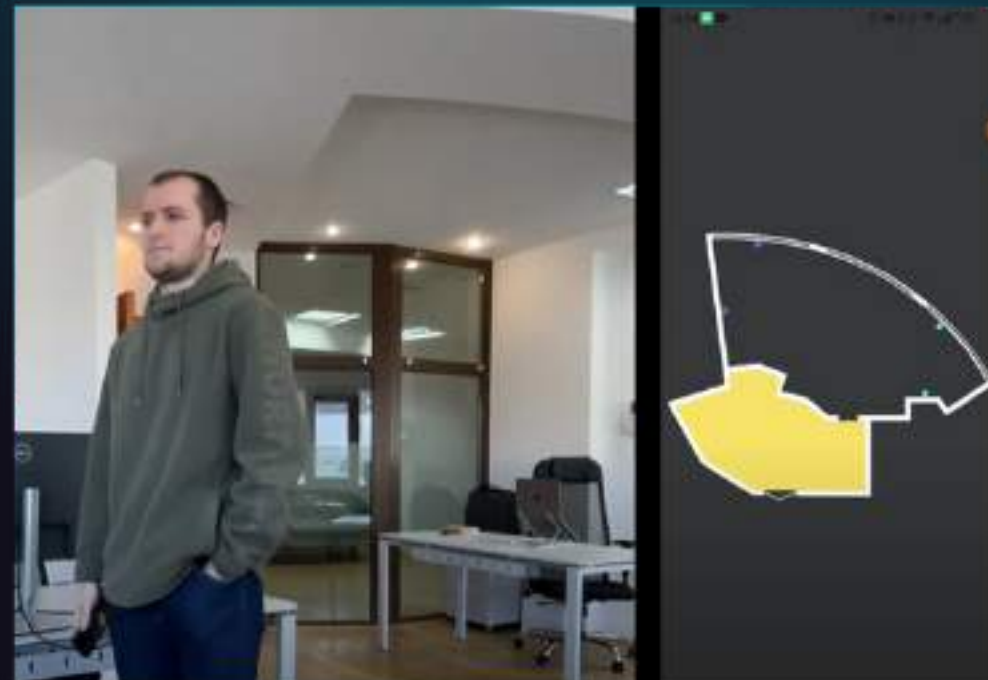


# Revolutionizing Indoor Positioning

**Our approach is about offering tailored solutions, balancing efficiency, cost, and precision to meet diverse indoor positioning needs.**



Click to watch



- **Flexible BLE Technology** offers efficient indoor positioning with acceptable accuracy and speed, combining cost-effectiveness for various applications. It is compatible with various beacon types (iBeacon and Eddystone), allowing for diverse manufacturer options.
- **UWB for Precision.** When precision and speed are paramount, our system can leverage Ultra Wideband technology, achieving positioning accuracy up to 10 cm and response times to movement in under a second.
- **Customer and Queue Video Recognition.** We aim to utilise standard, widespread cameras, optimising for the best possible performance and accuracy. Our advanced algorithms identify customers and analyse their queue positions, providing valuable insights for service improvement.
- **Broad Applications.** It is ideal for retailers, warehouses, and businesses interested in detailed indoor tracking and enhanced customer engagement.



# Inhouse Competence Centers

Top-skill experts in mobile development, cross-platform/PWA, frontend, backend, analytics, testing and design

## Flexibility in Everything

Need a quick launch or rapid team reassembly to meet new business demands? We're experts at it.

## Post-delivery Support

Ensure the team's participation in the finalization of the solution and elimination of critical bugs







# Development Resources

## CORPORATE DATA WAREHOUSES

- Storage: Oracle, Hadoop
- ETL: Informatica
- BI: Cognos, Tableau
- CDC: Oracle GoldenGate

## MOBILE

- Android: Java, Kotlin
- iOS: Swift

## CROSSPLATFORM | PWA

- JavaScript, TypeScript
- React, Redux
- WebAPIs

## BACKEND

- Development: Java, SpringBoot, SpringCloud, SpringData, Hibernate, .NET Framework, .NET Core, ASP.NET MVC
- SQL stores: PostgreSQL, MySQL,
- NoSQL stores: MongoDB, ElasticSearch, Cassandra
- ODS: Hazelcast, Redis
- Message Brokers: Kafka, RabbitMQ

## FRONTEND

- Development: Typescript, ReactJS, Redux (toolkit, saga), NextJS
- Library: RTQ, axios, cypress, jest

## INFRASTRUCTURE, CI/CD

- Docker
- Mesos/Marathon, Kubernetes
- Jenkins
- Ansible

## TESTING

- Zephyr, TestLink, Allure, Quase
- JUnit, Kotest, Mohito
- XCTest, Sourcery
- Selenium (Selenoid, Grid), Cucumber

## ANALYTICS

- UML, BPMN
- REST, SOAP
- Axure



# WislaCode customers confirm



Loucas Charalambous  
**payabl**

*We needed an Android SDK developed under **a tight timeline**, and their team delivered a flexible, user-friendly solution that integrated seamlessly into our ecosystem.*



Mikhail Krasnov  
**Executive Chairman at Verysell Group**

*The WislaCode team delivered on time and with outstanding quality. I want to mention the team's transparency while running the project – everything was **trackable, visible and manageable**.*



Aleksei Malenkin  
**\$lana (Monetech)**

*WislaCode specialists quickly synchronised and worked with the second team involved in developing our solution. As a result, having started development from scratch, we came to the expected result quickly. The first users went to the application after **5 months**.*





# WislaCode customers confirm



Julia Dvornikova  
**CoFounder, Taal Healthtech**

*Collaboration was effective, transparent, and predictable, which is especially critical for AI and ML projects.*

*A three-week proof of concept already showed tangible results. That early success made it easy for us to confirm the model's effectiveness and commit to a full-scale rollout.*

*The outcomes: **30% less travel time, 20% more visits per day**, lower operational costs, and stronger financial performance thanks to smarter, near real-time allocation.*



Yurii Lozinskyi  
**Head of Applied AI Lab**

*This was a very task-heavy project. However, by the end of WislaCode, we were left with a detailed roadmap consisting of clear milestones — able to be converted into tangible KPIs. Integrating this structured result ensured that the more complex and uncertain goals were converted into **30% ROI**.*





Viacheslav Kostin, CEO

+48 572 597 508

[vk@wislacode.com](mailto:vk@wislacode.com)

[LinkedIn >>](#)